

Hutchinson



Standard Unload

Power Sweep

Commercial Unload

Power Heads

***Bin
Unloading
Systems***

Klean Sweep... *the finishing touch.*

The unique back-up shield and torque tube combination adjusts for close floor clearance to maximize bin cleanup. It removes the grain in one or two revolutions, eliminating the need for an electrical swivel connector. A rubber disc wheel follows the bin perimeter on the sweep end, providing a forward movement and preventing sweep flight contact with the floor. An intermediate bearing stabilizes the sweep flight on 30' (and larger) bins.

6", 8" & 10" Standard Components Systems for 14' thru 48' Diameter Bins



The Ultimate in Flexibility

Bin Well Options

Hutchinson's wide choice of bin wells will fit your method of installation: under an aeration/drying floor, in a pre-formed trench or cast in concrete.

Match any of the well combinations (illustrated here) with the proper length of under-bin tube (8' thru 25') to make up a basic unloading package for 14' to 48' diameter bins. This also may be used beneath flat storage structures.

All Klean Sweeps feature sealed, self-aligning bearings and a motor mount with pivot stem.

All bin wells and tubes feature a galvanized or powder coat finish for extended life. Complete the system with an under-bin auger flight with your choice of power heads (shown on back page), slide gate control pipes and our patented Klean Sweep.



US Patent No. 4,008,816 Canadian Patent No. 1,040,572

Bin Wells with Roller Supported Slide Gate



Center w/ Full-Opening Gate



Center/Concrete Installation



Band-On Intermediate

Intermediate Options



Band-On Intermediate



Offset Intermediate



Shallow Intermediate

Center Well Options



Center with Full Gate



Center/Concrete Installation



Center w/Full Gate & Guide



Shallow Center



Center with Half Gate

Additional models of Center and Intermediate Wells available.

The Integrated Unloading System

Operated completely from outside the bin.

One motor on the exterior power head operates both unloading auger and bin sweep.

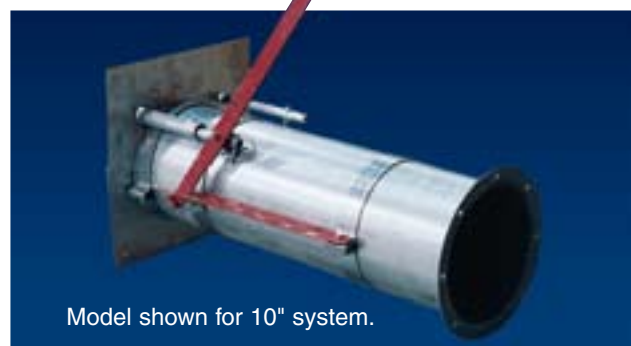
The base unit includes:

- Center power well and roller supported gate with gear boxes
- Bin sweep with back-up shield and reduction wheel
- Under-bin tube & auger
- Appropriate number of intermediate wells with roller supported gates
- Special bin wall flange
- Control Pipe Kit with Lever Opener

Power Heads include Horizontal, 25° Incline or Vertical (shown on back page). Low-Boy power heads are available (in any length between 20' and 50') to return grain to a center pit in circular bin arrangements.

All power heads attach with a square stub to make moving from one bin to another more time-efficient.

**6", 8" & 10"
Power Sweep
Package System
for 15' - 60'
Diameter Bins**



Model shown for 10" system.

Entire system operated from outside the bin.

The bin sweep, which remains in the bin at all times, is positioned near intermediate wells before filling. To unload, start the unloading auger with sweep clutch disengaged and open center well gate. After gravity flow stops in the center, open intermediate wells. When grain flow stops, shut off motor and engage sweep via separate clutch control rod. Start motor and the sweep will pull grain to the center well while moving around bin. Our Control Pipe and Lever System enhances the operator's ability to adjust the wells.

Photo 1: The center well is equipped with a double gear box assembly to transmit power from the under-bin auger to the sweep.

Photo 2: Both center and intermediate wells feature exterior gate control. The control pipe and lever system includes pipes that control the clutch and all wells plus outside levers and hardware.

Photo 3: A solid steel clutch with chain transmission is located in a separate enclosure (illustrated). A removable cover provides ready access for lubrication and maintenance.

Units are available pre-assembled. Includes powder coated un-loading tube with intermediate wells welded in place and with gate controls installed.

CALL TOLL-FREE

1-800-523-6993

FOR MORE INFORMATION ON PARTS AND SERVICE.



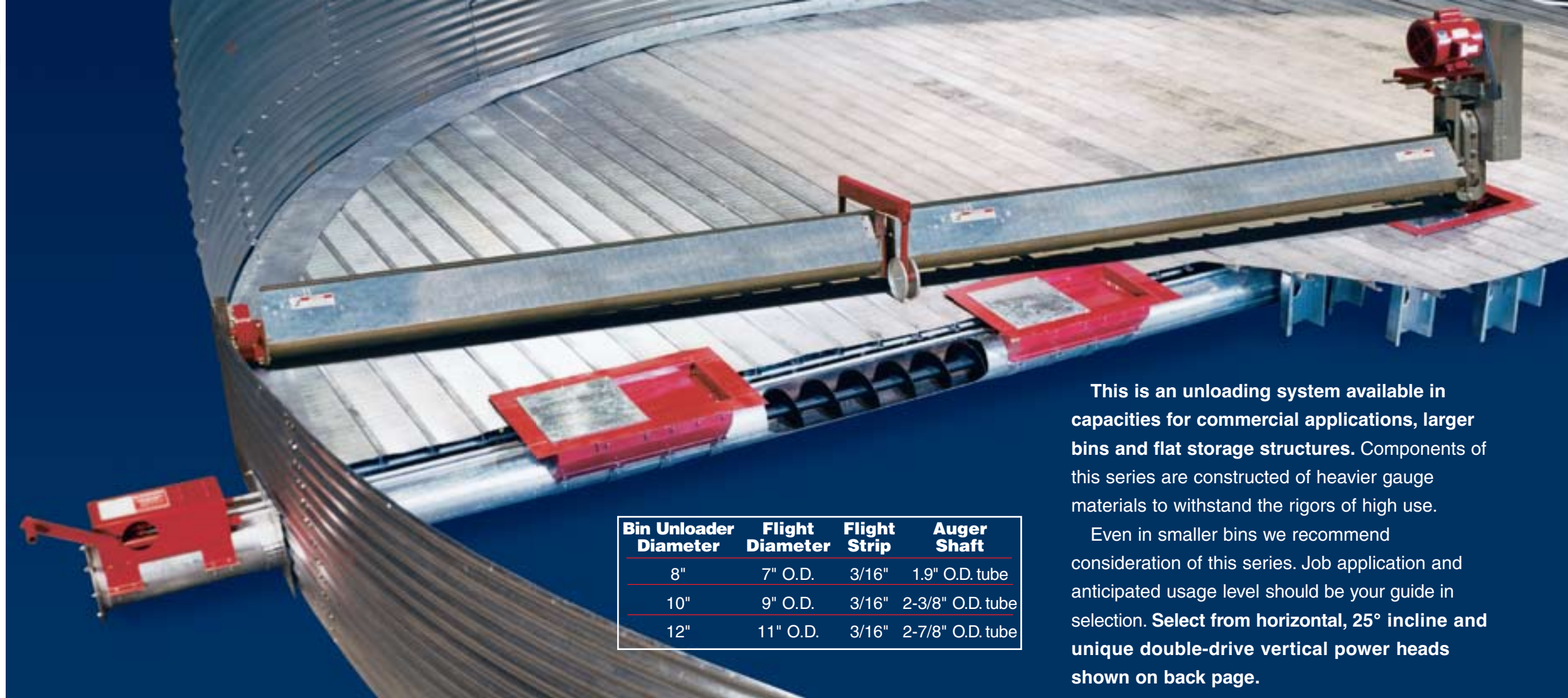
Note: Cover removed for illustration.

Commercial Unloader

**8", 10" & 12"
Commercial Grade
Components System
for 24' - 120'
Diameter Bins**



Klean Sweeps are sized to match the capacity of the unloading auger.



Bin Unloader Diameter	Flight Diameter	Flight Strip	Auger Shaft
8"	7" O.D.	3/16"	1.9" O.D. tube
10"	9" O.D.	3/16"	2-3/8" O.D. tube
12"	11" O.D.	3/16"	2-7/8" O.D. tube

This is an unloading system available in capacities for commercial applications, larger bins and flat storage structures. Components of this series are constructed of heavier gauge materials to withstand the rigors of high use.

Even in smaller bins we recommend consideration of this series. Job application and anticipated usage level should be your guide in selection. **Select from horizontal, 25° incline and unique double-drive vertical power heads shown on back page.**

Sweep Series	Bin Unloader Diameter	Flight Diameter	Flight Strip	Auger Shaft	Stub Size	Suggested Flight Speed	Oil Bath Drive	Reduction Wheel
68	6"	5" O.D.	3/16"	1.9" O.D.	1-1/4"	328 RPM	STD.	STD.
	8"					438 RPM		
810	8"	7" O.D.	3/16"	1.9" O.D.	1-1/2"	306 RPM	STD.	STD.
	10"					394 RPM		
1012	10"	9" O.D.	1/4"	2 7/8" O.D.	2"	250 RPM	STD.	STD.
	12"					290 RPM		
1214	12"	12" O.D.	1/4"	2 7/8" O.D.	2"	146-226 RPM	STD.	STD.



Commercial Klean Sweeps may also be used with U-Trough or Drag Conveyors.

Note: Klean Sweep requires a 1" inner diameter pivot socket in center of bin.



Photo 1: The Klean Sweep drive consists of a heavy duty motor mount and a cast aluminum housing, enclosing the chain and sprockets in oil.



Photo 2: Klean Sweeps for 48' and larger bins include a sweep carrier assembly for extra support of flight & shield. Two carriers for 90' and larger.



Photo 3: Rack & pinion slide gate controls operate center or intermediate wells with the change of a pin. We recommend using our factory-made control pipe kits to complete the job.



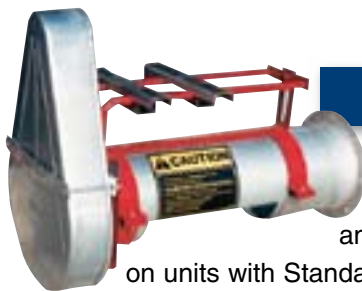
Photo 4 & 5: Bin wells have 1/4" plate steel gates supported by rollers; Gates slide into chambers protected from grain weight. May be used under suspended floor, in a trench or cast in concrete.

Power Heads



Commercial Double Drive Vertical

8", 10" and 12" Commercial Grade Verticals stand 16'6" tall. Separate direct belt or 3:1 oil bath reducer drives on horizontal and vertical sections speed-match capacities. This dual drive design will handle 24' thru 120' diameter bins. Includes 3', 45° discharge, base support and wall bracket. Kit available to attach 10" unit to 8" or 12" to 10" unload tube.



Horizontal

Horizontals available in 6", 8", 10" & 12". Single and double direct belt drives on units with Standard Components System. Commercial Grade furnished with 2, 3 & 4 belt drives, many with oil bath reducers.

Standard Vertical

6", 8", and 10" 16'6" Tall Vertical for use with Standard Components System on bins through 48' diameter. Discharge directly into truck, trailer or mill. One drive with heavy right angle oil bath gearbox runs both the vertical and under-bin auger. Electric powered, includes 45° discharge with 3' long solid spout, base support and bin wall mounting bracket. Kit available to attach 8" vertical to 6" or 10" to 8" unload tube.



25° Inclined

25° Inclines for use with 6", 8", 10" and 12" systems through 75' diameter bins.

Five foot length provides about 2' extra discharge

height. Includes adjustable support stand to which you can attach optional wheel kit for portability. Two & three belt "B" section drives. Internal bearing in elbow. Units are offered as 6" (horizontal) to 6" (incline), 6" to 8", 8" to 8", 8" to 10", 10" to 12" and 12" to 14". We recommend the step-up sizes at all times for maximum capacity and smooth grain flow.

ALSO AVAILABLE: Low-Boy and Variable Angle Auger Connectors (not illustrated). Special length or height power heads available with special drives - Ask for details.

IMPORTANT: Keep all shields and safety devices in place at all times. Observe all safety signs and warnings shown on the product and in the operator's manual.



P.O. Box 629 • Clay Center, KS 67432
Ph. (785) 632-2161 • FAX (785) 632-5964
<http://www.hutchweb.com>

Call Toll-Free
1-800-523-6993
For more information.